

Libretto istruzioni

User manual

Manuel d'Instructions

Bedienungsanleitung

Gebruiksaanwijzing

Manual de instrucciones

Manual de Instruções

Brugsvejledning

Bruksanvisning

Руководство по эксплуатации

Instrukcja Obsługi

دليل التركيب

Bruksanvisning

KSEG5XE - KSEG7XE

INDICE

IT

CONSIGLI E SUGGERIMENTI.....	5
CARATTERISTICHE.....	6
INSTALLAZIONE.....	7
USO.....	9
MANUTENZIONE.....	10

INDEX

EN

RECOMMENDATIONS AND SUGGESTIONS.....	11
CHARACTERISTICS.....	12
INSTALLATION.....	13
USE.....	15
MAINTENANCE.....	16

SOMMAIRE

FR

CONSEILS ET SUGGESTIONS.....	17
CARACTERISTIQUES.....	18
INSTALLATION.....	19
UTILISATION.....	21
ENTRETIEN.....	22

INHALTSVERZEICHNIS

DE

EMPFEHLUNGEN UND HINWEISE.....	23
CHARAKTERISTIKEN.....	24
MONTAGE.....	25
BEDIENUNG.....	27
WARTUNG.....	28

INHOUDSOPGAVE

NL

ADVIEZEN EN SUGGESTIES.....	29
EIGENSCHAPPEN.....	30
INSTALLATIE.....	31
GEBRUIK.....	33
ONDERHOUD.....	34

INDICE

ES

CONSEJOS Y SUGERENCIAS.....	35
CARACTERÍSTICAS.....	36
INSTALACIÓN.....	37
USO.....	39
MANTENIMIENTO.....	40

ÍNDICE

PT

CONSELHOS E SUGESTÕES.....	41
CARACTERÍSTICAS	42
INSTALAÇÃO.....	43
UTILIZAÇÃO	45
MANUTENÇÃO.....	46

INDHOLD

DK

RÅD OG ANVISNINGER	47
APPARATBESKRIVELSE	48
INSTALLATION.....	49
BRUG	51
VEDLIGEHODELSE	52

INNEHÅLL

SE

REKOMMENDATIONER OCH TIPS	53
EGENSKAPER.....	54
INSTALLATION.....	55
ANVÄNDING	57
UNDERHÅLL.....	58

УКАЗАТЕЛЬ

RU

СОВЕТЫ И РЕКОМЕНДАЦИИ	59
ХАРАКТЕРИСТИКИ	60
УСТАНОВКА.....	61
ЭКСПЛУАТАЦИЯ.....	63
УХОД.....	64

SPIS TREŚCI

PL

UWAGI I SUGESTIE	65
WŁAŚCIWOŚCI TECHNICZNE	66
INSTALACJA.....	67
UŻYTKOWANIE	69
KONSERWACJA	70

الفهرس

SA

ارشادات و اقتراحات.....	71
الخصائص.....	72
التركيب.....	73
الاستخدام.....	75
عملية الصيانة.....	76

INNHold

ANBEFALINGER OG FORSLAG	77
EGENSKAPER.....	78
INSTALLASJON.....	79
BRUK	81
VEDLIKEHOLD	82

RECOMMENDATIONS AND SUGGESTIONS

⚠ The Instructions for Use apply to several versions of this appliance. Accordingly, you may find descriptions of individual features that do not apply to your specific appliance.

INSTALLATION

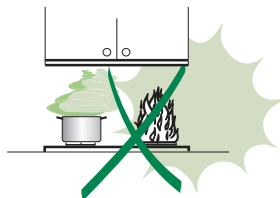
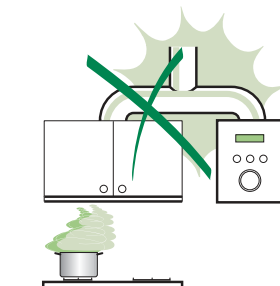
- The manufacturer will not be held liable for any damages resulting from incorrect or improper installation.
- The minimum safety distance between the cooker top and the extractor hood is 650 mm (some models can be installed at a lower height, please refer to the paragraphs on working dimensions and installation).
- Check that the mains voltage corresponds to that indicated on the rating plate fixed to the inside of the hood.
- For Class I appliances, check that the domestic power supply guarantees adequate earthing. Connect the extractor to the exhaust flue through a pipe of minimum diameter 120 mm. The route of the flue must be as short as possible.
- Do not connect the extractor hood to exhaust ducts carrying combustion fumes (boilers, fireplaces, etc.).
- If the extractor is used in conjunction with non-electrical appliances (e.g. gas burning appliances), a sufficient degree of aeration must be guaranteed in the room in order to prevent the backflow of exhaust gas. The kitchen must have an opening communicating directly with the open air in order to guarantee the entry of clean air. When the cooker hood is used in conjunction with appliances supplied with energy other than electric, the negative pressure in the room must not exceed 0,04 mbar to prevent fumes being drawn back into the room by the cooker hood.
- In the event of damage to the power cable, it must be replaced by the manufacturer or by the technical service department, in order to prevent any risks.
- If the instructions for installation for the gas hob specify a greater distance specified above, this has to be taken into account. Regulations concerning the discharge of air have to be fulfilled.


USE

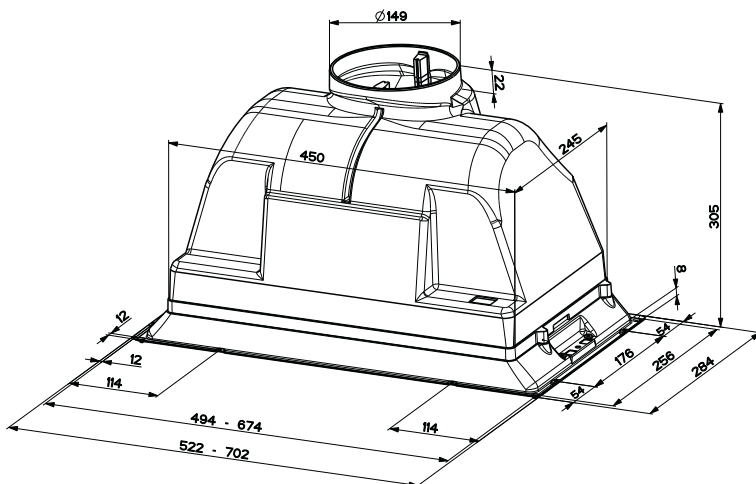
- The extractor hood has been designed exclusively for domestic use to eliminate kitchen smells.
- Never use the hood for purposes other than for which it has been designed.
- Never leave high naked flames under the hood when it is in operation.
- Adjust the flame intensity to direct it onto the bottom of the pan only, making sure that it does not engulf the sides.
- Deep fat fryers must be continuously monitored during use: overheated oil can burst into flames.
- Do not flambé under the range hood; risk of fire
- This appliance is not intended for use by persons (including children) with reduced physical, sensory or mental capabilities, or lack of experience and knowledge, unless they have been given supervision or instruction concerning use of the appliance by a person responsible for their safety.
- Children should be supervised to ensure that they do not play with the appliance.
- "CAUTION: Accessible parts may become hot when used with cooking appliances."

MAINTENANCE

- Switch off or unplug the appliance from the mains supply before carrying out any maintenance work.
- Clean and/or replace the Filters after the specified time period (Fire hazard).
- Clean the hood using a damp cloth and a neutral liquid detergent.



The symbol  on the product or on its packaging indicates that this product may not be treated as household waste. Instead it shall be handed over to the applicable collection point for the recycling of electrical and electronic equipment. By ensuring this product is disposed of correctly, you will help prevent potential negative consequences for the environment and human health, which could otherwise be caused by inappropriate waste handling of this product. For more detailed information about recycling of this product, please contact your local city office, your household waste disposal service or the shop where you purchased the product.

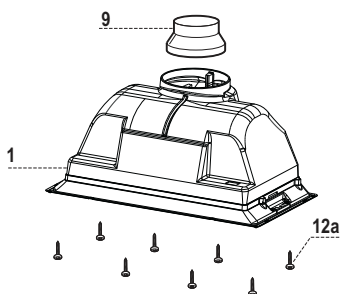


Components

Ref.	Q.ty	Product Components
1	1	Hood Body, complete with :Controls, Light, Blower, Filters
9	1	Reducer Flange ø 150-120 mm

Ref.	Q.ty	Installation Components
12a	8	Screws

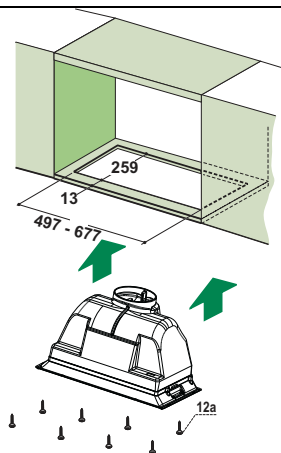
Q.ty	Documentation
1	Instruction Manual



INSTALLATION

SCREWS FITTING

- The hood can be installed either directly on the bottom surface of the wall units (min. 650 mm above the hob).
- Cut a fitted opening in the bottom surface of the wall unit, as shown.
- Fix using the 8 screws **12a** provided.

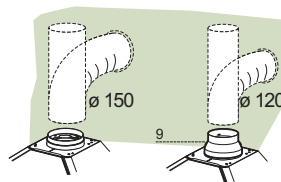


Connections

DUCTED VERSION AIR EXHAUST SYSTEM

When installing the ducted version, connect the hood to the chimney using either a flexible or rigid pipe \varnothing 150 or 120 mm, the choice of which is left to the installer.

- To install a \varnothing 120 mm air exhaust connection, insert the reducer flange **9** on the hood body outlet.
- Fix the pipe in position using sufficient pipe clamps (not supplied).
- Remove possible charcoal filters.



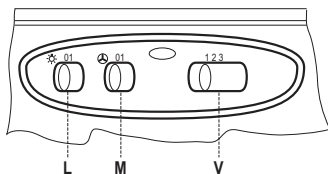
RECIRCULATION VERSION AIR OUTLET

- Connect the flange to the outlet on the shelf over the hood using a flexible or rigid pipe (ø120 or 150 mm).
- To install a ø 120 mm air exhaust connection, insert the reducer flange **9** on the hood body outlet.
- Fix the pipe in position using sufficient pipe clamps (not supplied).
- Ensure that the activated charcoal filters have been inserted.

ELECTRICAL CONNECTION

- Connect the hood to the mains through a two-pole switch having a contact gap of at least 3 mm..

USE



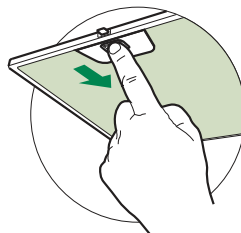
L	Light	Switches the lighting system on and off
M	Motor	Switches the extractor motor on and off
V	Speed	Sets the operating speed of the extractor: <ol style="list-style-type: none">1. Low speed, used for a continuous and silent air change in the presence of light cooking vapour.2. Medium speed, suitable for most operating conditions given the optimum treated air flow/noise level ratio.3. Maximum speed, used for eliminating the highest cooking vapour emission, including long periods.

MAINTENANCE

Grease filters

CLEANING METAL SELF-SUPPORTING GREASE FILTERS

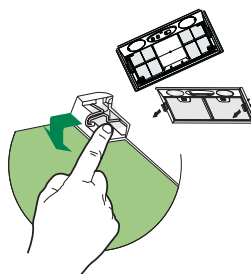
- The filters must be cleaned every 2 months of operation, or more frequently for particularly heavy usage, and can be washed in a dishwasher.
- Remove the filters one at a time by pushing them towards the back of the group and pulling down at the same time.
- Wash the filters, taking care not to bend them. Allow them to dry before refitting.
- When refitting the filters, make sure that the handle is visible on the outside.



Charcoal filter (recycling version)

REPLACING THE CHARCOAL FILTER

- Charcoal filter cannot be regenerated or washed. It has to be substituted at least every 4 months or even more frequently when the use of the hood is particularly intensive.
- Remove the filter support pulling downwards the side levers.
- Remove the saturated charcoal filter by releasing the fixing hooks
- Fit the new filter and fasten it in its correct position.
- Put the metal grease filters in their seats.



Lighting

LIGHT REPLACEMENT

28W-40W light.

- Remove the metal grease filters.
- Unscrew the bulbs and replace them with new ones having the same characteristics.
- Replace the metal grease filters.

